



Install and Configure Mercury Mail for Windows NT 4.0 Server

Revised: January 7, 2000

Reviewed: March 8, 2002

Introduction

Mercury /32 is an SMTP/POP3 mail server for Windows NT and Windows 95 platforms. MOREnet recommends installation on an NT4 Domain Server for centralized mailbox and rights management.

Note: Mercury does not recognize users or groups as defined for the NT Domain, so manual input of user information is required.

Before You Install

1. Log on to the NT server as Administrator. Using Windows NT Explorer, make **one** directory for user mailboxes on the NT server, for example `c:\mail`. If a centralized home directory has already been defined for domain users this directory may be used, but Mercury will only point to one location for mailboxes. The name of the user directory (mailbox) must match the username exactly. At this point you can add individual user directories (mailboxes) or you can add them later during Mercury configuration. After Mercury has been installed with the default mailbox directory, Mercury automatically creates a user mailbox there every time a new user is added.
2. Grant the group everyone “write” permissions to the parent directory. For each user subdirectory the user should have all rights and the group everyone should have “write” permissions. For example:

Parent directory=`c:\mail` Rights for group everyone = “write”

Mailbox=`c:\mail\username` Rights for group everyone = “write”
Rights for user = “full control”

3. TCP/IP and DNS must be configured and working on your server.
4. Your Internet Domain name must be registered with MOREnet. To register, send e-mail with the IP number of your server and the Internet Domain name for your mail server to: register@more.net
For example: `ip#xxx.xxx.xxx.xxx = Mail.District.K12.MO.US`

Installation

1. Log into your NT domain as administrator. From a Web browser download the Mercury self-extracting file from www.pegasus.usa.com to a directory on your NT File Server.
2. The current supported version is m32-301a.exe
3. Double click on the .exe file to start the installation process.
4. Click setup.

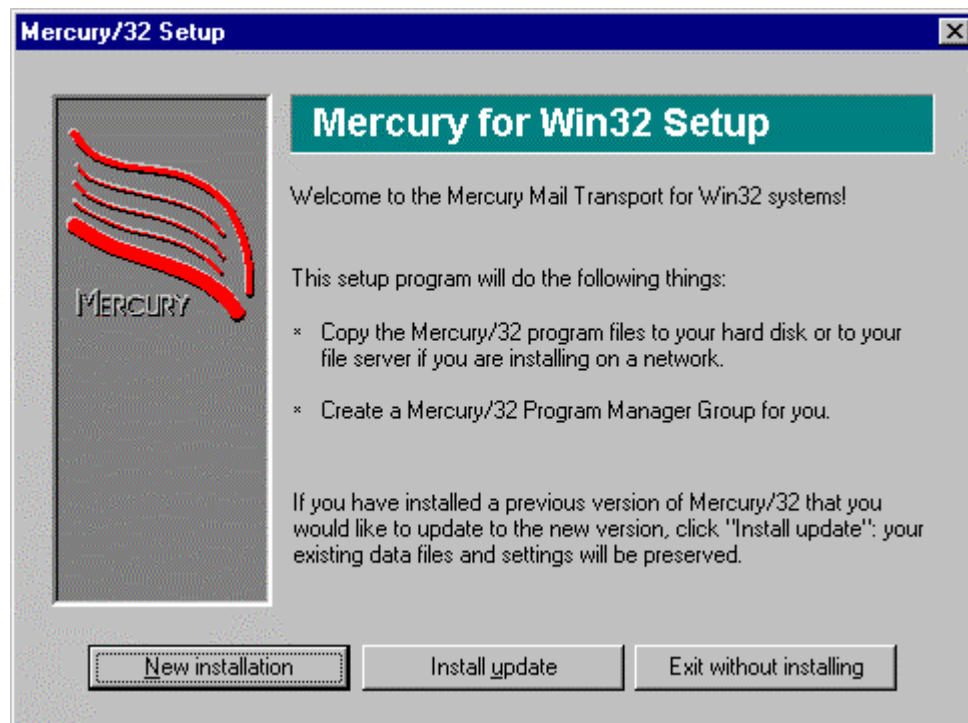


Figure 1 Setup

5. Choose new installation or Install update.
6. When a page appears showing the new features of Mercury version 3.01, click continue.
7. Choose no NetWare support (unless your are running nwgateway on your server).
8. Accept the default directory for Mercury or type in another location.
9. Click no Pegasus Mail integration.

10. Type in the location of your mailbox directory as defined earlier (c:\mail).

11. Protocol Configuration – choose the following:

- SMTP Server
- POP3 Server

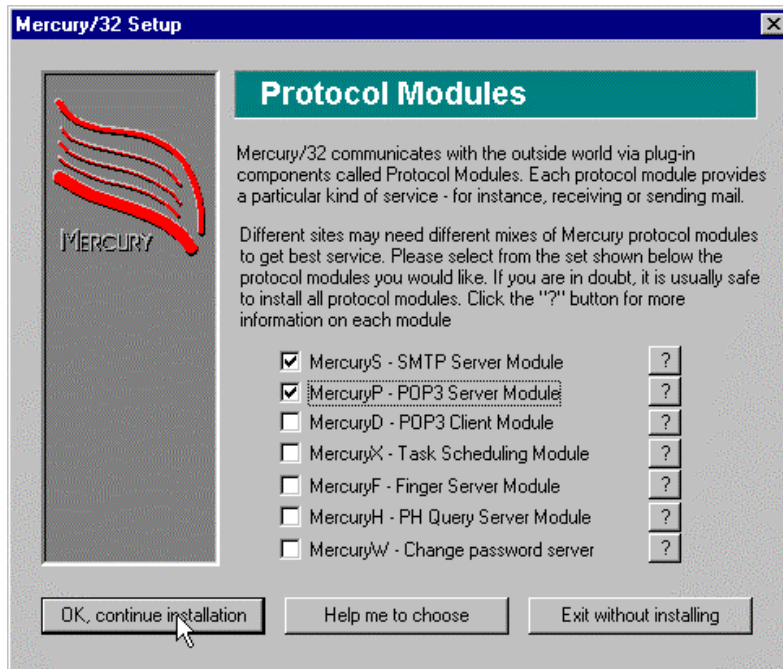


Figure 2 Protocols

12. Click OK to continue. The SMTP client module screen appears.

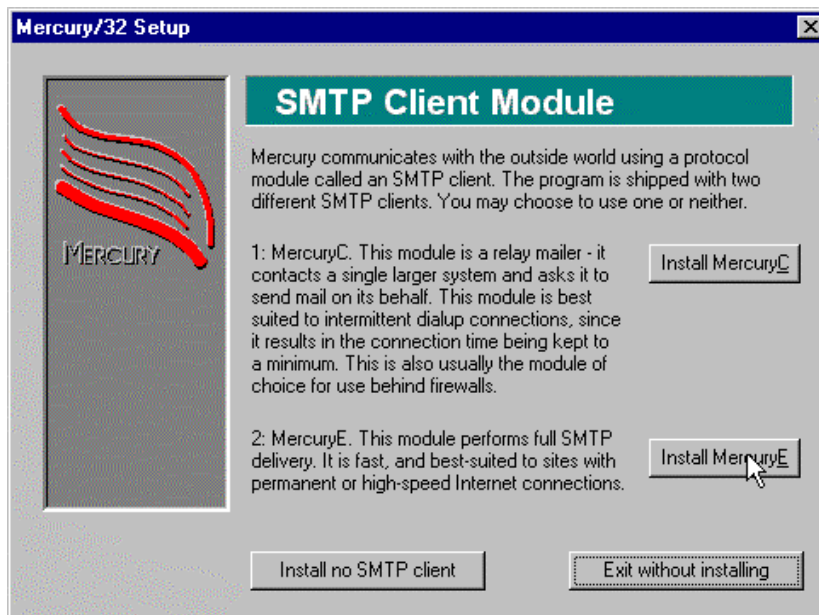


Figure 3 SMTP client

13. Choose install Mercury^E. A screen appears asking for configuration information.
14. Define Internet domain name. For example: `District.k12.mo.us`
15. Username for postmaster (person to receive delivery notifications).
16. The next screen asks for type of relaying policy; choose strict relay.
Note: You must choose strict relay to comply with MOREnet Acceptable Use Policy.

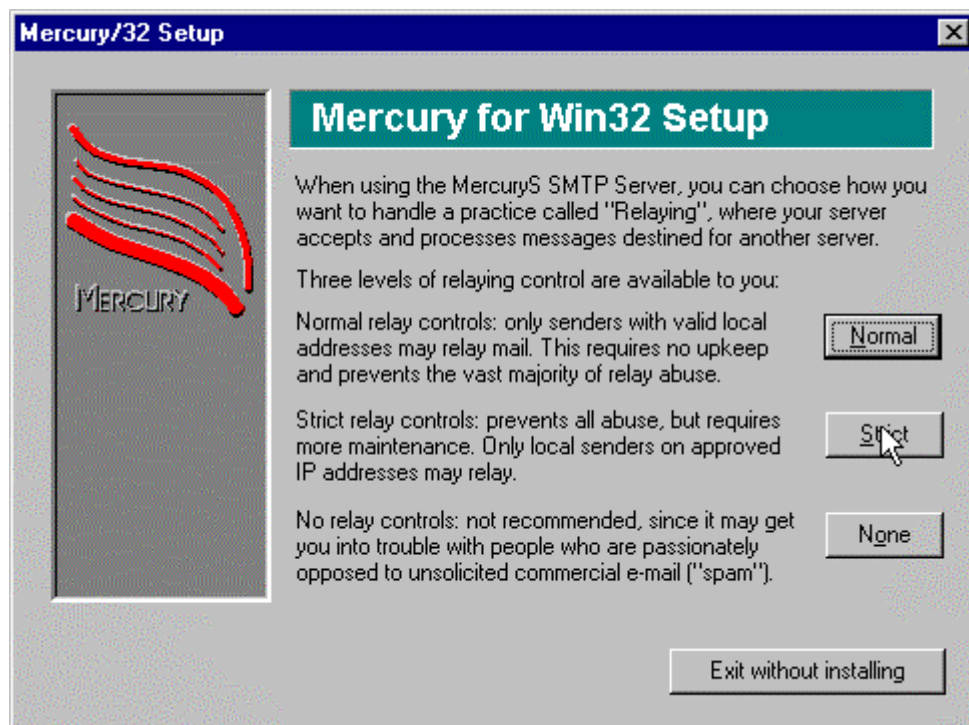


Figure 4 Strict Relay Policy

17. The next screen asks for the queue location; accept the default.
 18. Mercury is ready to install. Review settings before you click OK.
 19. When completed, click exit. Your mail server is ready to go.
 20. From Program Menu click Mercury to start mail server
- Mercury is started from a program menu (the modules do not run as services on an NT server).

Configure Mail Server

1. Go to the configuration menu in Mercury, then choose Mercury Core Module. The local mailbox directory path will default to \~8. This screen should reflect all the settings as defined during installation.

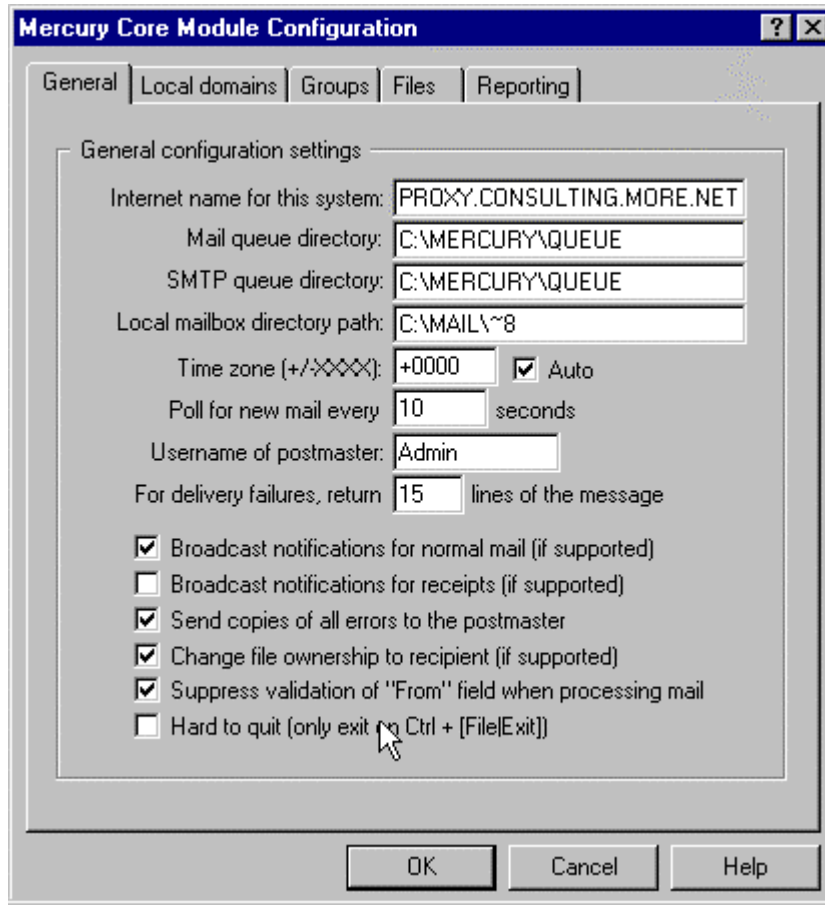


Figure 5 Core Configuration

2. Select the Local domains tab. This screen asks you to define local domains that will be serviced by this Mercury Mail server. You should have at least three entries:
 - One for the local name
 - One or more Internet Domain Names
 - One for the IP number of the machine

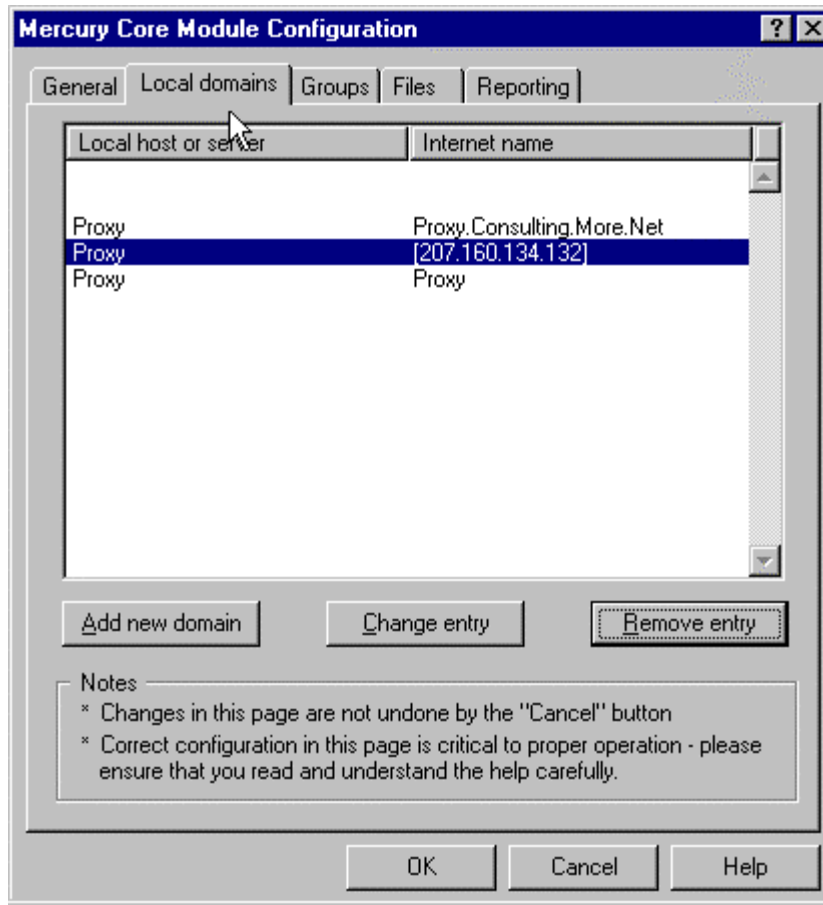


Figure 6 Local Domains

- From the configuration menu choose SMTP Server. Because strict relaying is enabled, you must define which private and public networks are allowed to send mail through your mail server.

***Note:** A new feature has been included with this version that allows for SMTP authentication. This is an optional selection that provides an additional level of security. If this option is selected the user will be asked for their password every time they send an outgoing message.*

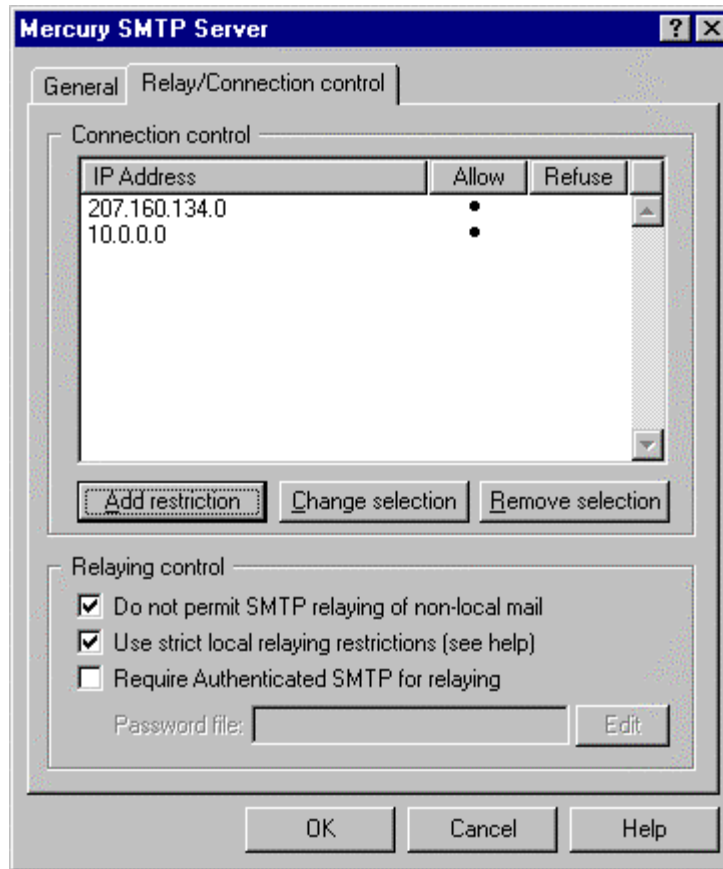


Figure 7 Relay Control

4. From the configuration menu choose Manage local users. All of the folders in the designated mailbox directory should show up as mail users.

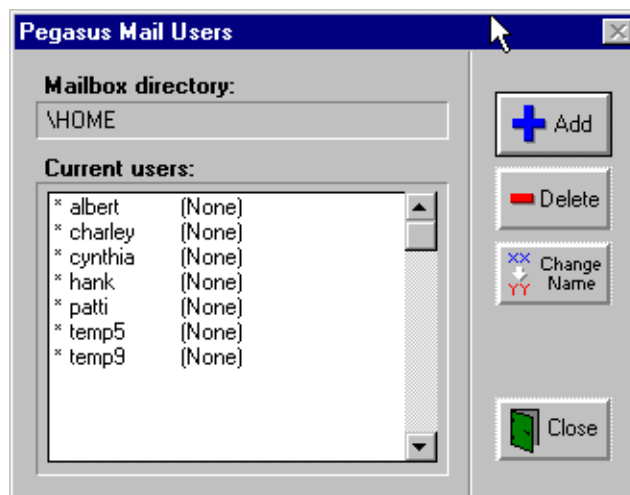


Figure 8 Define Local Users

5. If you assign a password, a `password.pm` file will be created in the users' mailbox directory. At this point you have two options:
 - Assign passwords for all users OR
 - Type in a generic password for all users and let users manually edit their `password.pm` files.

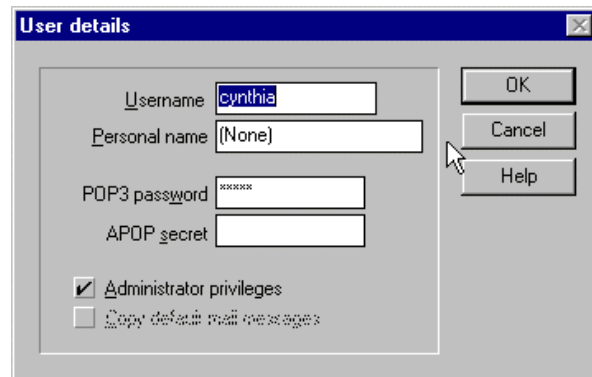


Figure 9 Assign Passwords

Note: Mercury will not recognize an NT domain logon password; a POP3 password must be defined. Passwords are case-sensitive.

6. Users with Administrator privileges can manage user information and change configuration options on the server.
7. Load a POP3 client such as Eudora or Netscape mail on a workstation and fill in the POP information for a user on your mail server. Test functionality of server by sending yourself a message.

Additional Features

Mailing Lists

Mailing lists can be managed through Mercury Mail once the user database is set up. A “List of Lists” file is a text file that defines mailing lists served by Mercury and their parameters. The path for this file is defined in the `mercury.ini` file by default as:

```
c:\mercury\mercury\lists.mer
```

This file must be present (even if it is empty) before Mercury will allow you to configure the lists. Once the file is present you can go to the configuration list and choose mailing lists.

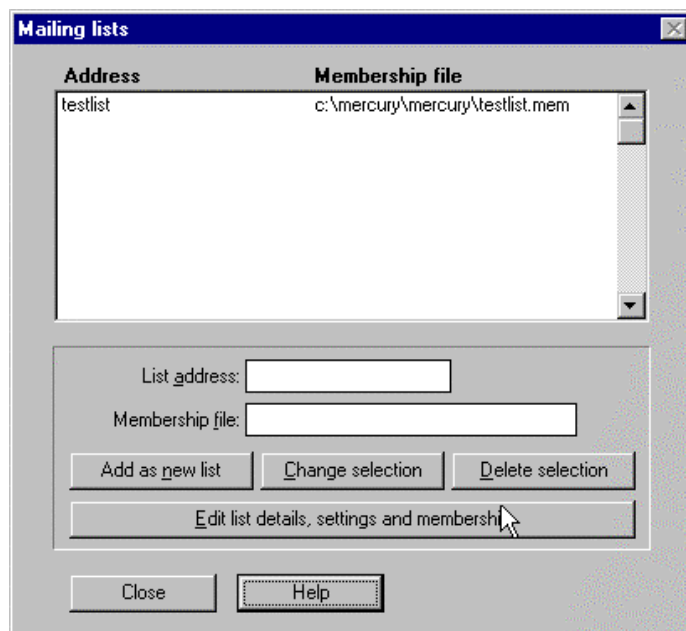


Figure 5 - Define a Mailing List

Type in the list address (if it is local, you do not have to add the domain name) and a name for the membership file, then add as new list. Once the list has been added you can select that list and choose edit list details, settings and membership.

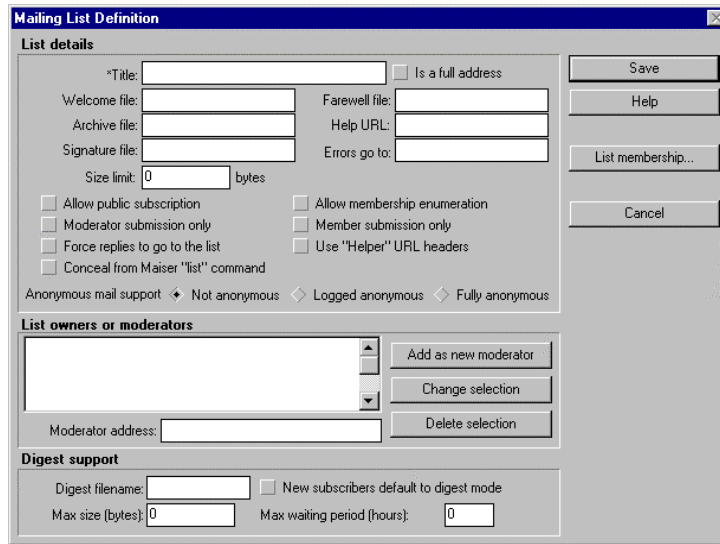


Figure 6 - Configure Mailing Lists

Refer to the Mercury help guides for a complete description of each variable defined and its effect on the mailing list. Once the parameters have been defined, authorized users can subscribe to the list by sending e-mail to:

maiser@host.domain

Users can also unsubscribe, view members, view lists available by host and set mail and digest functions. Moderators can add or remove users and change their options.

Aliases

The alias option allows you to forward e-mail to non-local servers and to set up special types of e-mail accounts. Simply choose alias from the configuration menu, then type in the alias and the real address.

For example, **alias=local username** and **real address=local username@aol.com**

Any e-mail that is delivered to the Mercury server for the local user is automatically forwarded to their account on aol.com.